

**LITHEAUDIO**

# SPEAKER FIRE HOOD - 250

INSTALLATION GUIDE FOR PLASTERBOARD CEILINGS

BS476 PART 21 COMPLIANT.

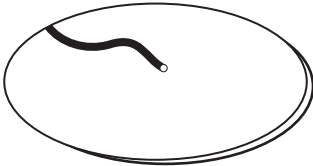


1 HOUR FIRE PROTECTION COVERS



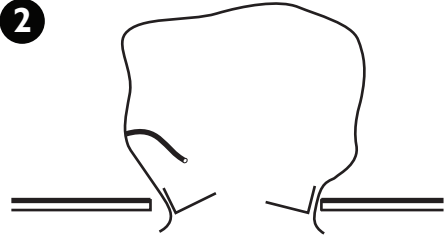
**IMPORTANT: BEFORE COMMENCING ANY WORK ENSURE THE POWER SUPPLY IS SWITCHED OFF AT THE MAINS AND YOU FULLY READ THESE INSTRUCTIONS BEFORE STARTING INSTALLATION.**

**1**



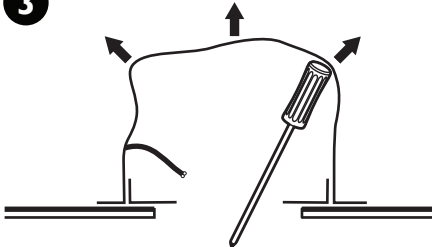
Position the power cable and/or speaker cable in the ceiling aperture ready to feed through cable inlet.

**2**



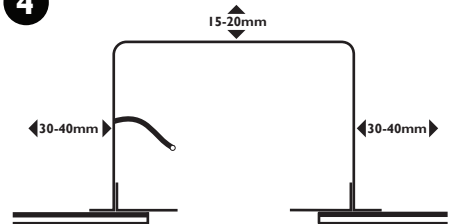
Carefully squeeze and push the speaker hood through the ceiling aperture and feed the power/speaker cable through the cable inlet.

**3**



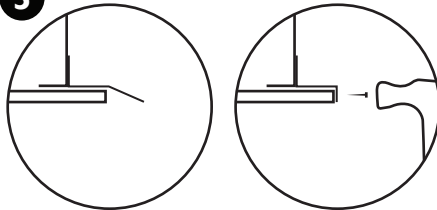
Using the handle of a hammer or screwdriver push out the speaker hood so it is fully opened and in position.

**4**



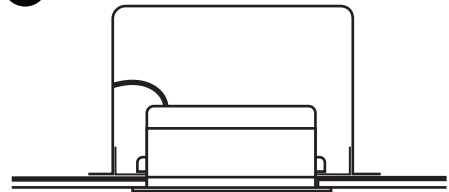
Ensure you allow a 15-20mm clearance above and a 30-40mm clearance around the fire hood.

**5**



Equally space the fire hood around the aperture. Bend the 2 metal fixing strips using pliers, remove off any excess metal using cutters then screw/tack securely in position.

**6**



Connect the power and/or speaker cable connections prior to fixing the speaker into the ceiling.

Lithe Audio Ltd, 1 Kelvin Way, Manor Royal, Crawley, West Sussex, UK, RH10 9SE  
Tel: +44(0)1293 922 015 Fax: +44(0)1293 471 444 info@litheaudio.com www.litheaudio.com



Lithe Audio Ltd fire hoods are designed to comply with current Building Regulations BS4756 Part 21. For a full list of test reports and specification please contact Lithe Audio technical department