

LITHEAUDIO®

FIRE & ACOUSTIC HOOD - 270

BS476 PART 21 COMPLIANT.

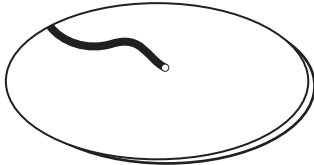


INSTALLATION GUIDE FOR PLASTERBOARD CEILINGS



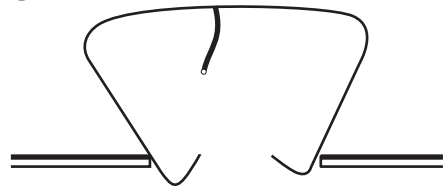
IMPORTANT: BEFORE COMMENCING ANY WORK ENSURE THE POWER SUPPLY IS SWITCHED OFF AT THE MAINS AND YOU FULLY READ THESE INSTRUCTIONS BEFORE STARTING INSTALLATION.

1



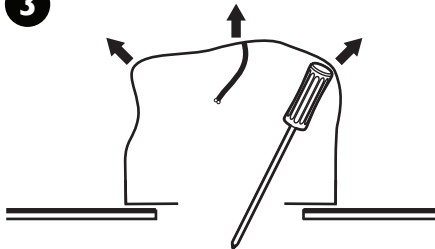
Position the power cable and/or speaker cable in the ceiling aperture ready to feed through cable inlet.

2



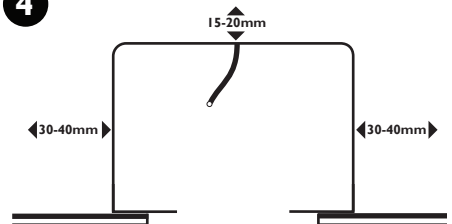
Drill a hole on the side or top of the speaker feed the power/speaker cable through the hood. Carefully squeeze and push the speaker hood through the ceiling aperture.

3



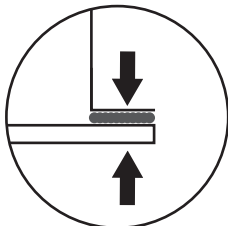
Using the handle of a hammer or screwdriver push out the speaker hood so it is fully opened and in position.

4



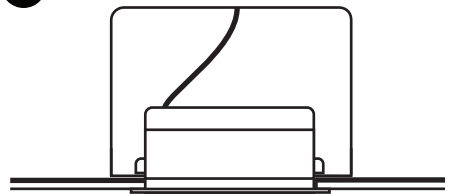
Ensure you allow a 15-20mm clearance above and a 30-40mm clearance around the fire hood.

5



Run a thick, continuous bead of adhesive filler around the upper surface of the plasterboard. The flange of the hood will sit on this bead to create an airtight seal. Compress the hood on the adhesive to create an airtight seal.

6



Connect the power and/or speaker cable connections prior to fixing the speaker in to the ceiling.